

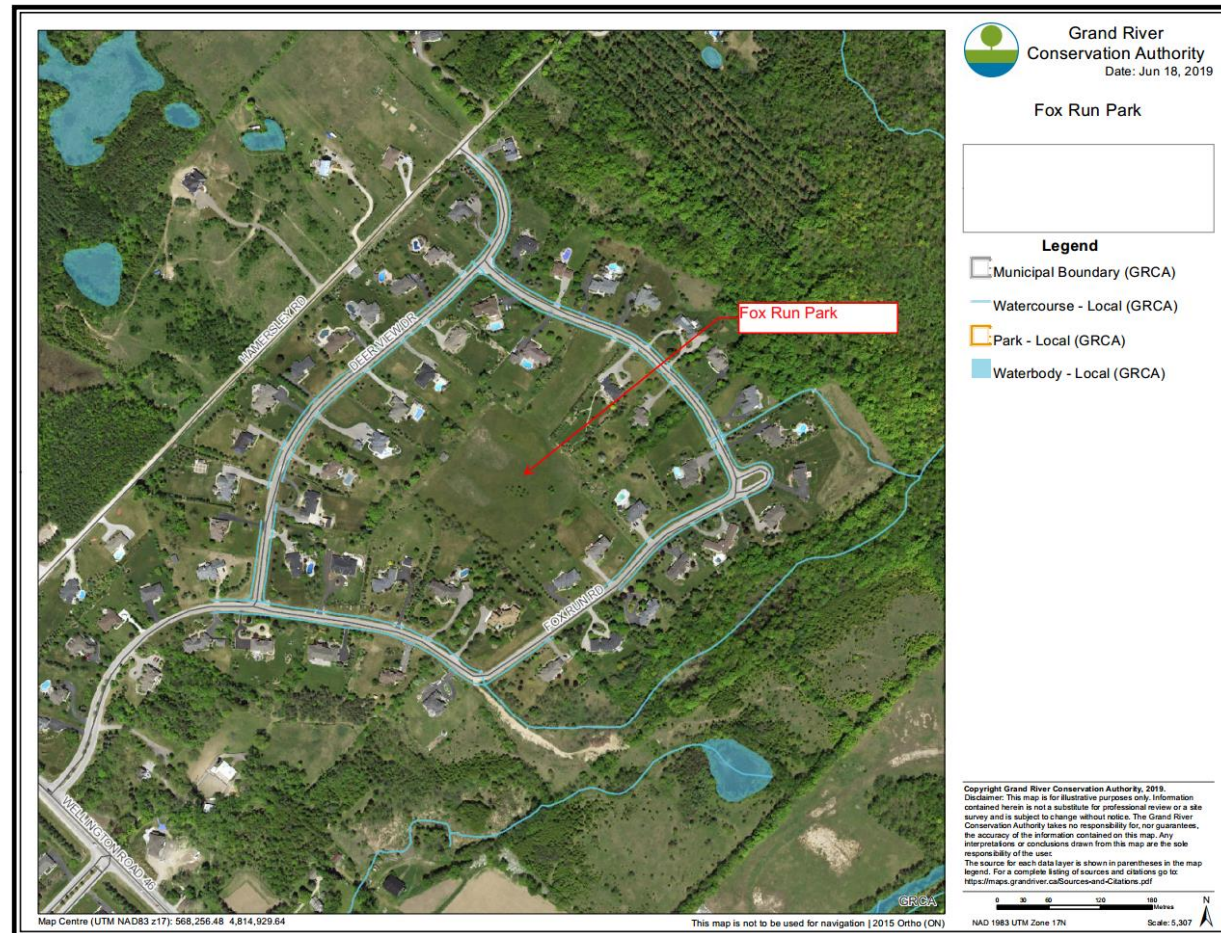
TOWNSHIP OF PUSLINCH Fox Run Park Accessible Trail



June 19, 2019

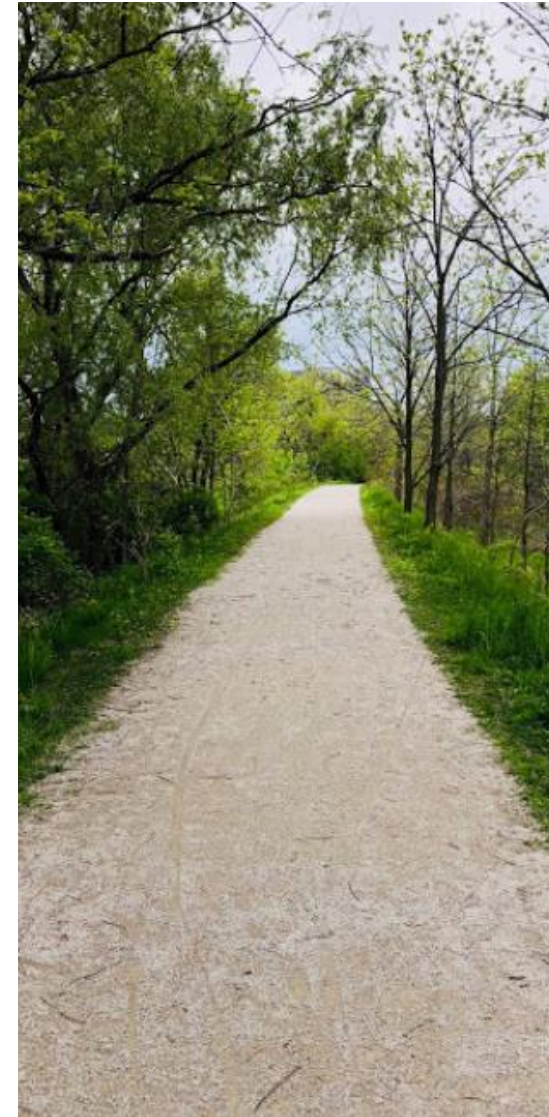
Fox Run Park

- 2.3-hectare park block in Fox Run subdivision Phase 1
- acquired by the Township in the early 90's
- bounded by residential dwellings
- narrow accesses fronting to Fox Run Drive and Deer View Ridge.
- no amenities, facilities or signage



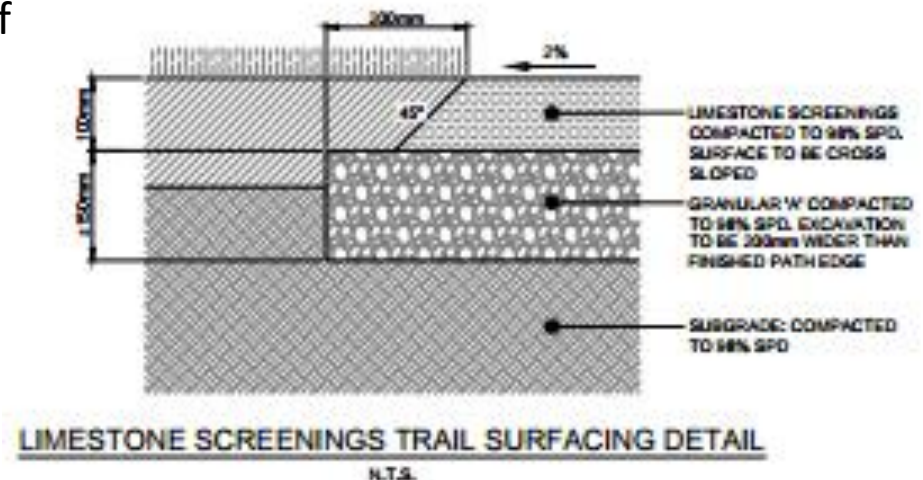
Accessibility

- Designed to meet accessibility requirements outlined in the County of Wellington Facility Accessibility Design (FADM) and Accessibility for Ontarians with Disabilities Act (AODA), including:
 - minimum width for accessible route of 1830 mm,
 - running slope not steeper than 1:25,
 - cross slope not steeper than 1:50,
 - rest area(s), with contrasting ground surface, provided adjacent to the trail,
 - accessible entrance gates,
 - edge protection at drop offs (if any),
 - no minimum spacing for rest stops, requirements determined through consultation.



Trail Construction

- 400m long accessible trail
- constructed of 100mm of compacted limestone screenings, with 150mm compacted granular 'A' base,
- meandering path through centre of parkland
- trail width increased to 2.5m at access from Fox Run Drive to permit maintenance vehicle access,
- one rest area located at the midpoint of the trail,
- lockable swing gates and/or bollards to discourage access by motorized recreation vehicles.



Required Modifications

- some cutting, filling and re-grading required,
- small section of retaining wall required at entrance from Fox Run Drive,
- drainage modifications / vegetation clearing along the east property line, including installation of new drainage culvert.

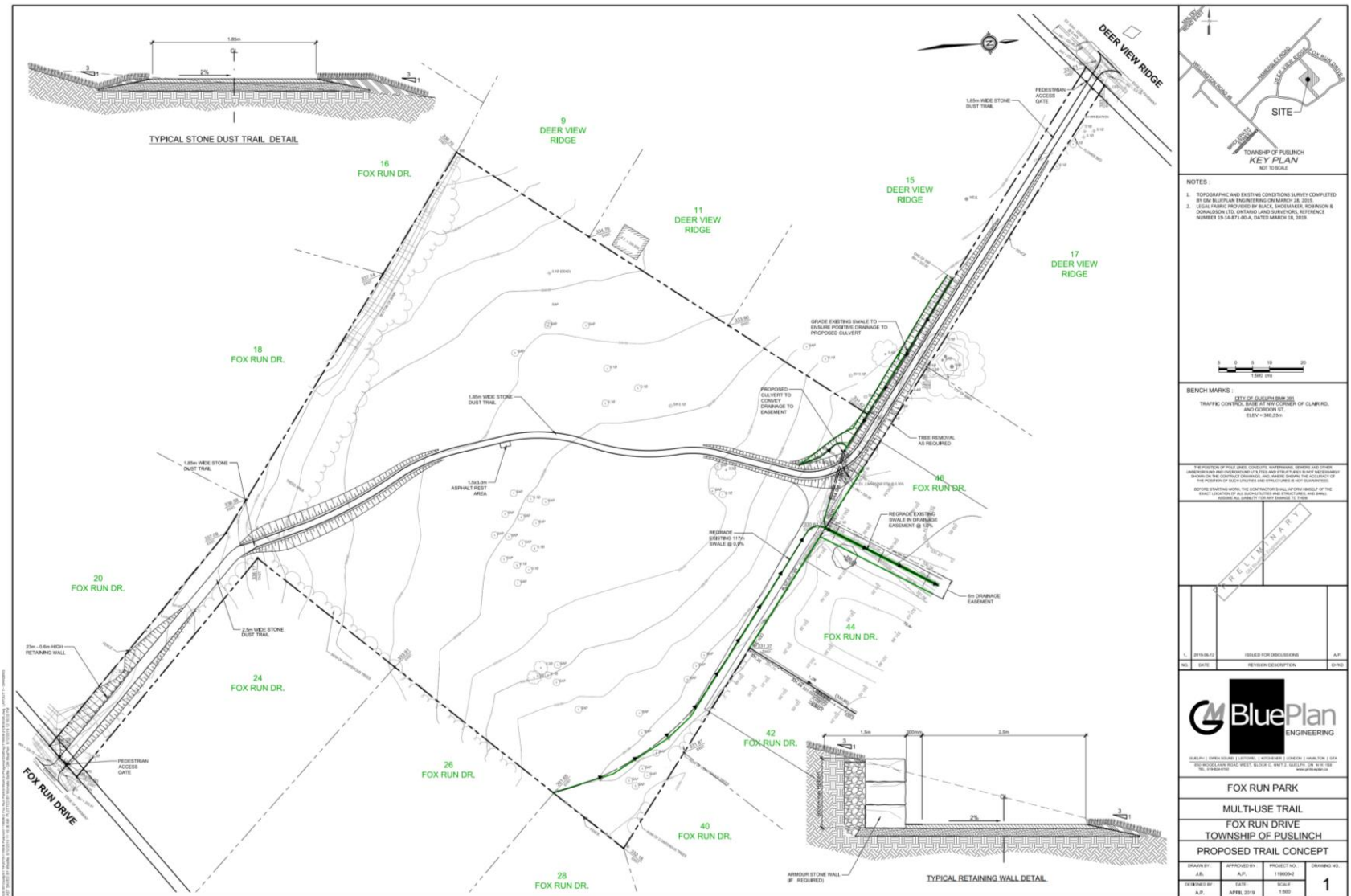


Required Modifications

- eastern area of the parkland has some drainage challenges.
- elevation of the outlet at the roadside ditch is limiting factor
- re-grading of the drainage swales/easement to minimize localized ponding



Concept Trail Plan



Encroachments

- Township completed legal survey which identified encroachments,
- One requires removed to undertake the work (bridge).



Signage

- AODA requires specific signage detailing trail length, surface type, average and minimum width, running and cross slope, and location of amenities.

Landscaping and Screening

- Additional landscaping or screening has not been incorporated at this time.

Cost Estimate

- The estimate cost for construction of the limestone screening trail is as follows:

limestone trail	\$ 80,000
retaining wall at entrance	\$ 15,000
grading and drainage	<u>\$ 20,000</u>
	\$115,000

Schedule

- To achieve spending target for the accessibility grant, the following schedule is proposed to achieve the spending deadline:
 - Community consultation (Public Meeting) - July 22, 2019.
 - Incorporate comments, finalize trail design – August 7, 2019
 - Council approval of trail design – August 14, 2019
 - Prepare tender specifications, Issue for Tender – September 4, 2019
 - Close tender – September 18, 2019
 - Trail Construction – October/November 2019

Questions?